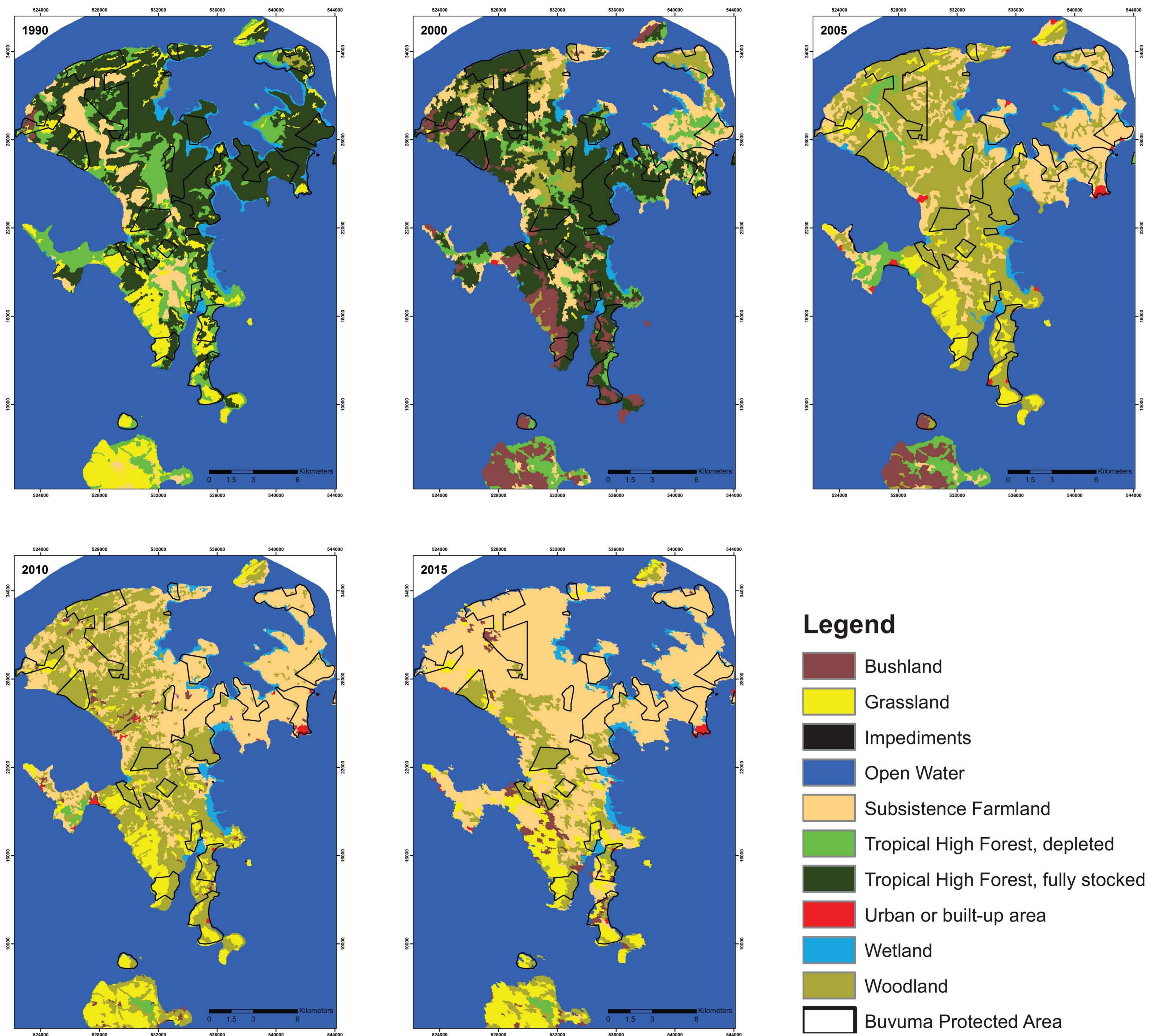


# CHANGES IN LAND COVER/LAND USE

## BUVUMA ISLAND, BUVUMA DISTRICT BETWEEN 1990 AND 2015



THE 1990 TO 2005 MAPS WERE OBTAINED FROM THE MAPPING DEPARTMENT OF NATIONAL FORESTRY AUTHORITY (NFA).

This map has been printed under the Green Livelihoods Alliance (GLA) Programme 'Forested landscapes for equity; with support from Tropenbos International.



Plot 23 JOFRA House,  
Kiswa Bugolobi,  
P. O. Box 29940 Kampala, Uganda  
+256 414 666776  
office@ecotrendsalliance.org  
www.ecotrendsalliance.org



**Visiting address:** Lawickse Allee 11  
6701 AN Wageningen (first floor)  
**Mailing address:** Tropenbos International  
P. O. Box 232  
6700 AE Wageningen  
The Netherlands  
**Contact:** +31 317 702 020  
tropenbos@tropenbos.org